

## ASSAN ESC PC Interface Software User's Guide

Dear customer,

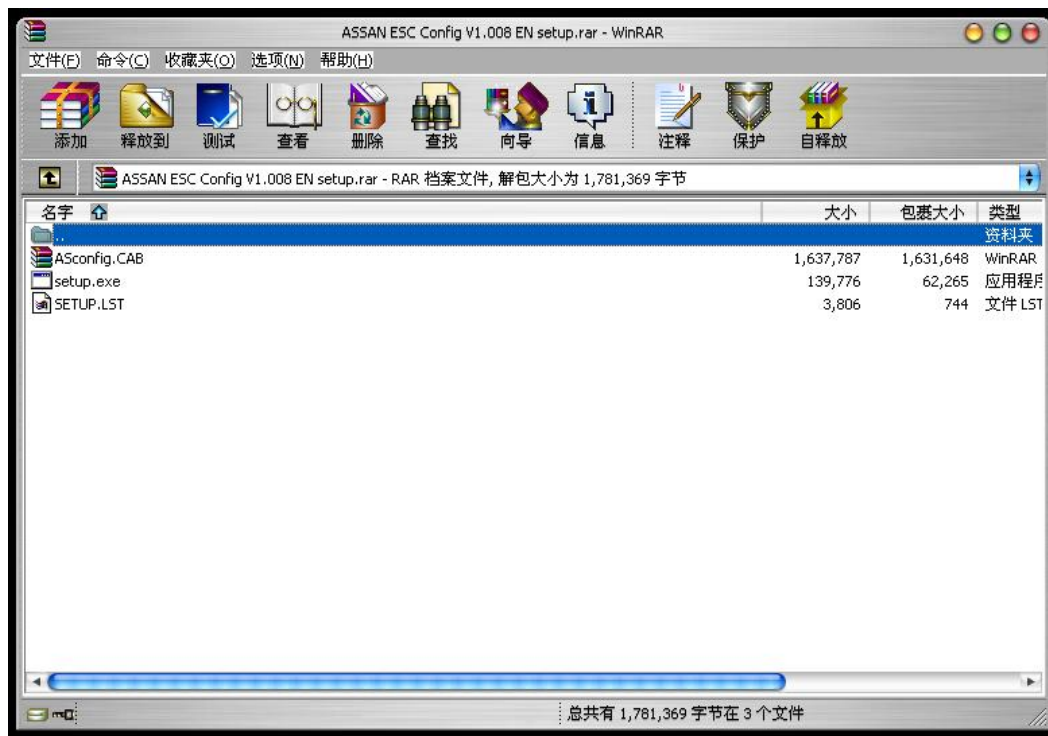
Welcome to use **ASSAN** ESC PC –Connector and Interface Software. It allows of the Electronic Speed Controller programming in the desktop PC and tests your model's power system.

### 1. Install the Interface Software in your computer

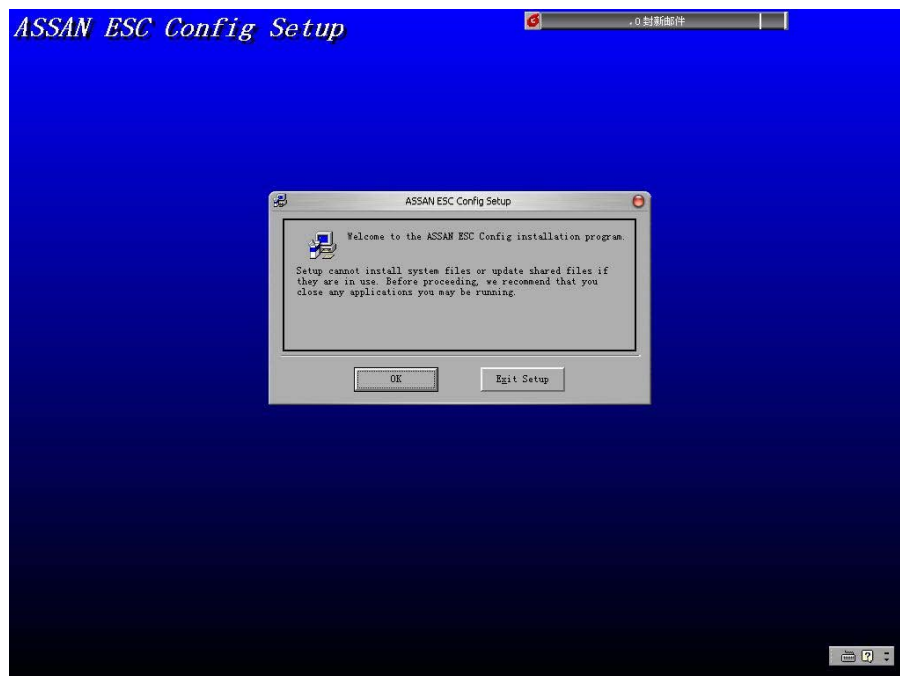
The Interface Software is supplied as a compressed “zip” file in order to save the space. You can get it from [www.assan.cn](http://www.assan.cn) or some **ASSAN** distributor's website.

Please save this file and “unzipped” the contents to a directory ready for installation.

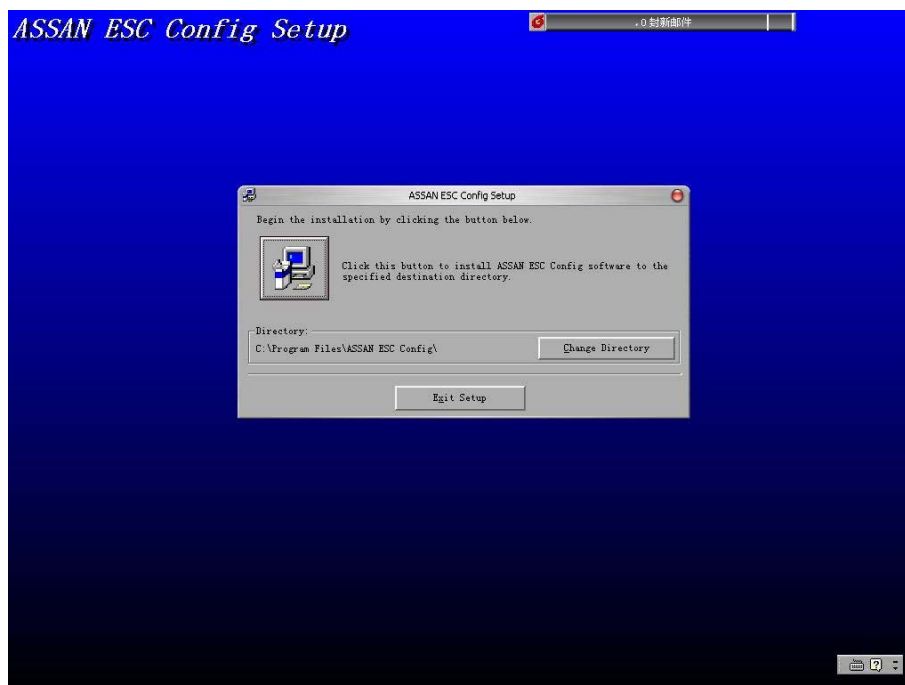
After you unzipped the contents you should see the following installation files:



Double-click the “setup.exe” icon to start the installation of the software and follow the on-screen instructions.

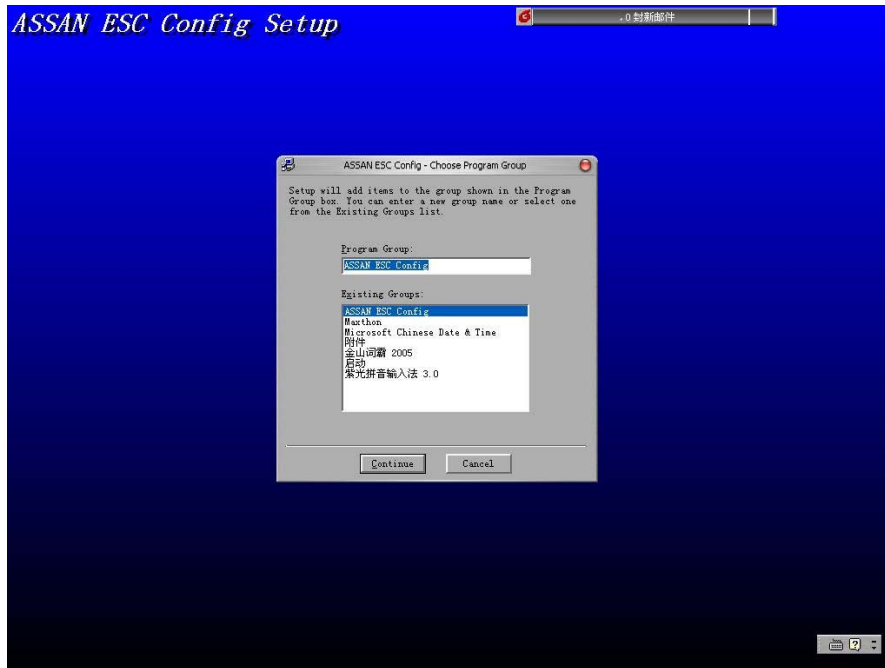


Install Interface 1: Dot the “OK”

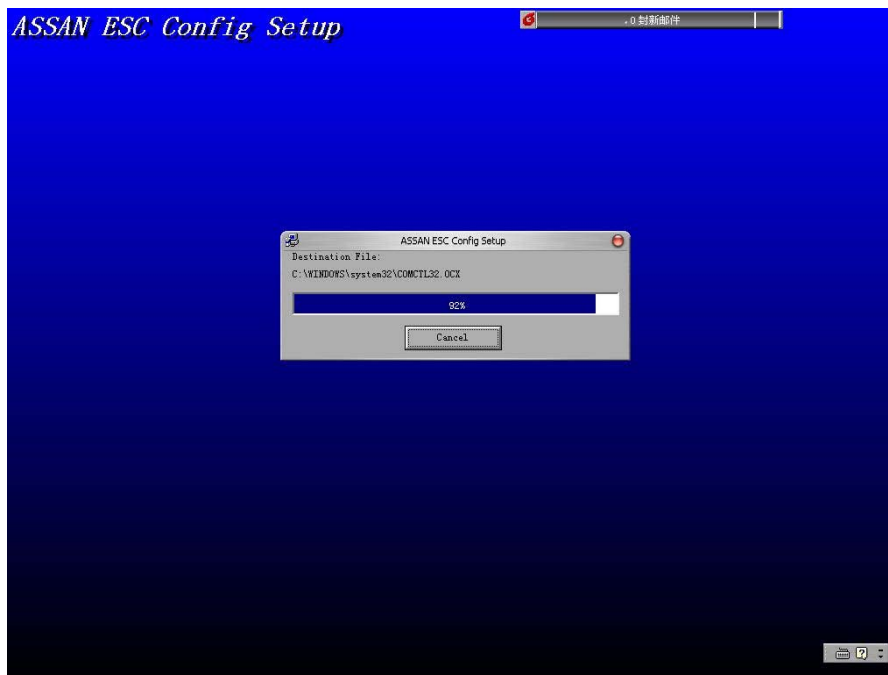


Install Interface 2: Choice the right way then dot





Install Interface: Accept default setting



Install Interface: Installing

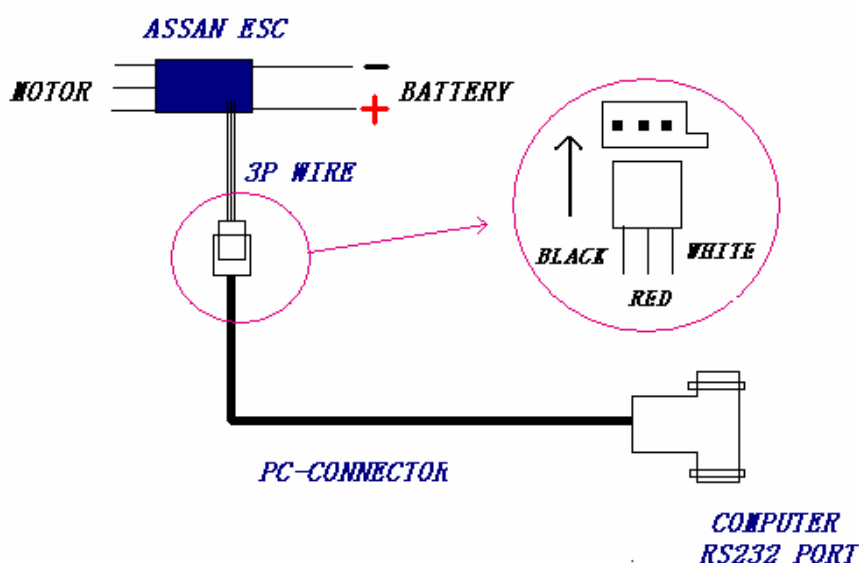


Install Interface: Finished

The installation program will only create an entry on the start menu of “Config of **ASSAN** ESC”. You can create the shortcut on the desktop by yourself.

## 2. Connect the ASSAN ESC to your PC-Connector

The three pin connector is easy to connect with your ASSAN ESC's 3p wire connector, the only things need pay attention is the 3p wire's sequence to the PC-Connector, as shown in the picture below:



The RS232 end is connect with your computer's 9-pin serial ports.

## 3. Connect the PC-connector to your computer

When your computer has RS232 port (serial port), put the PC-Connector to it. If not, you need pursue an "USB-RS232" adapter in ASSAN or some other one which have been tested by ASSAN.

Always the USB adapter need install driver software in your computer; there will be in CD-ROM Company with the USB adapter. Found it and install the software.

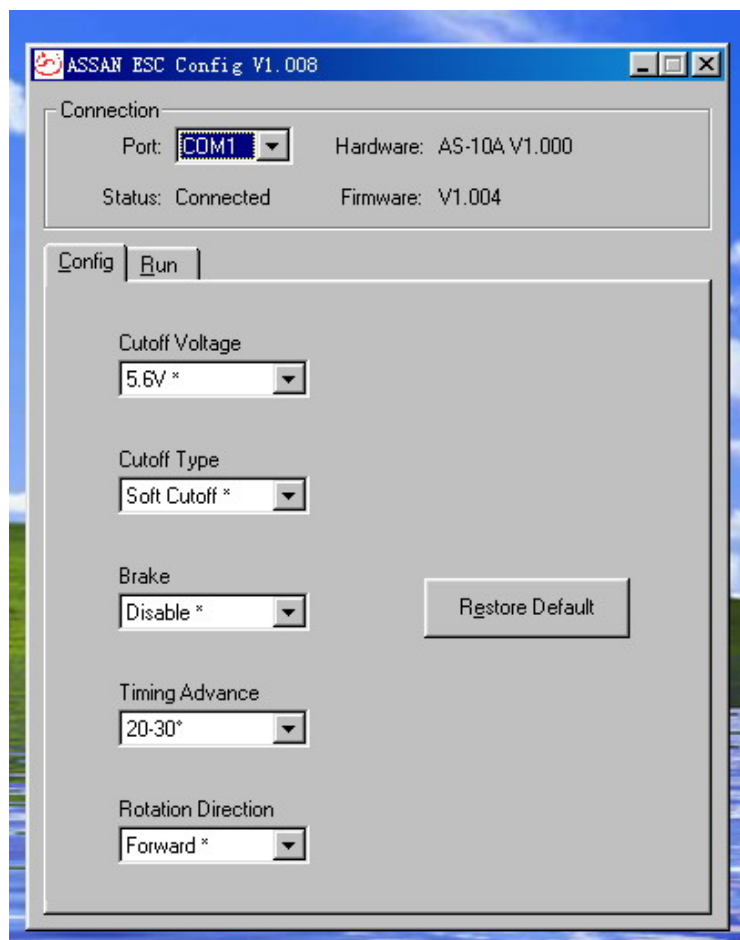
#### 4. Using the software to programming your **ASSAN** ESC

Programming your **ASSAN** ESC on screen need complete all items above and power on your ESC. It can use your own main power that power your model or some other battery power (**BE SURE that polarity is correct, and the voltage between 5v to 10v is fine.**) If you don't need testing your power system, disconnect the motor and propeller.

If the software was correctly installed and connect no problem, when power on , you should hear two beeps or three beeps from the **ASSAN** ESC. It is same as your ESC's behavior in your ready flying model.

You choice what serial port is present in your PC (com 1-5) connect with ESC.

When it show connected, the also show what type ESC present and what software version of your ESC's.



The setting screen contains five different programmable setting that can be changed on the **ASSAN** ESC.

These settings are similar to the settings in your **ASSAN ESC User Guide**. To change the settings, move your mouse and use the drop down box to change the setting.

**NOTE: Setting was changed immediately when your choice one.**

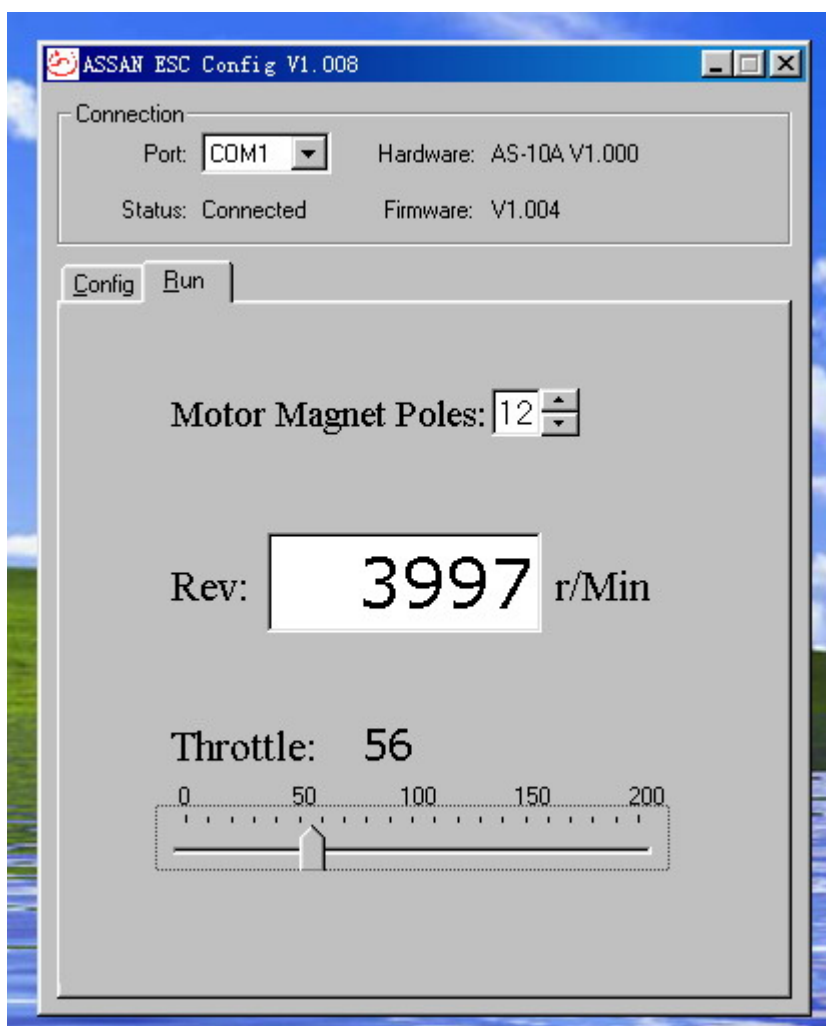
There have another button to restore to factory setting of all items.

When you finished setting all item and don't want to test on screen, you need power off your ESC and remove your ESC from the PC-Connector. At this time, the ESC is ready for flying.

## 5. Using the software to testing your model's power system

The advantage of **ASSAN** PC Interface Software is which can test your power system on PC screen.

Before you test, you must install your power system and make sure you have been mounting your motor and propeller safely. (The safety is important, same as the real flying prepare item. All attention has been show in *ASSAN ESC's User Guide* or other document such as the ready flying model's manual).





After install all parts and setting all items, turn to testing interface like above picture show. Choose the number your motor's pole is (it can get from your motor supplier). Use the mouse pull the throttle button or use the up and down arrow in your keyboard, which is similar as transmitter throttle pole when you flying your model. Start and running, the RPM window's number is mutative with you throttle pole. The RPM is accurate if you choice the correct data of your motor pole. You can depend on it to test your power system and estimate it. Changed the programmable setting such as advance timing, you can get different result.

## **6. Finally**

This software will be under constant development. If you have any advice please fell easy to send e-mail to us. The address is [servers@assan.cn](mailto:servers@assan.cn). Thanks.